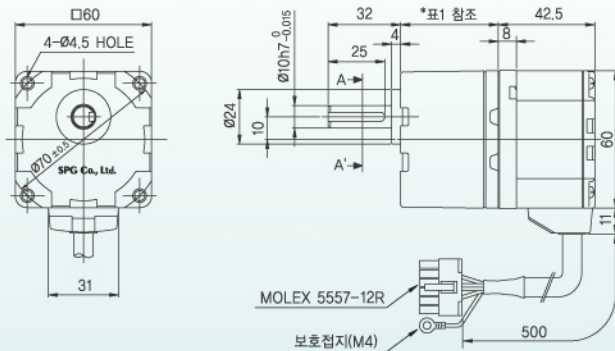


GEARED MOTOR

Model : XLA620()-□K

[Unit : mm]

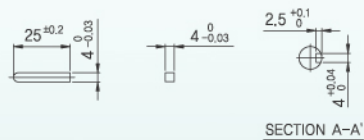
- Motor : XLM620G
- Gear Head : XTG65K~XTG6200K
- Control Unit : XLD20()



- ※ 품명중의 ()는 전압사양을 표시합니다.
- ※ 품명 중의 □는 감속비를 표시합니다.
- ※ Geared Motor는 취부용 bolt set가 내장되어 있습니다. (사양은 19page 참조)

Key (부속품)

Key홈



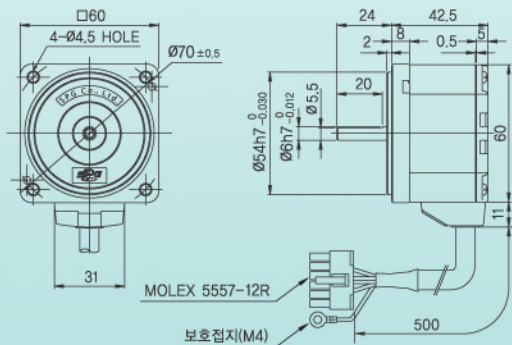
※ 표1

Gear Ratio	Size(mm)
XTG65K~XTG620K	34
XTG630K~ XTG6100K	38
XTG6200K	43

MOTOR

Model : XLM620D

[Unit : mm]



※ 표2-Weight

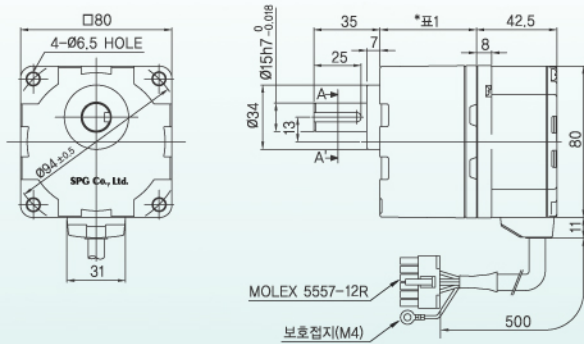
Part	Weight(kg)	
Motor	0.48	
Gear Head	XTG65K~XTG620K	0.28
	XTG630K~ XTG6100K	0.33
	XTG6200K	0.37

GEARED MOTOR

■ Model : XLA840()-□K

[Unit : mm]

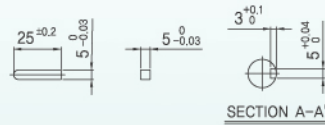
- Motor : XLM840G
- Gear Head : XTG85K~XTG8200K
- Control Unit : XLD40()



- ※ 품명중의 ()는 전압사양을 표시합니다.
- ※ 품명 중의 □는 감속비를 표시합니다.
- ※ Geared Motor는 취부용 bolt set가 내장되어 있습니다. (사양은 19page 참조)

■ Key (부속품)

■ Key홈



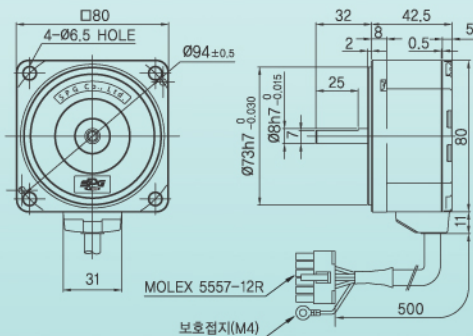
※ 표1

Gear Ratio	Size(mm)
XTG85K~XTG820K	41
XTG830K~ XTG8100K	46
XTG8200K	51

MOTOR

■ Model : XLM840D

[Unit : mm]



※ 표2-Weight

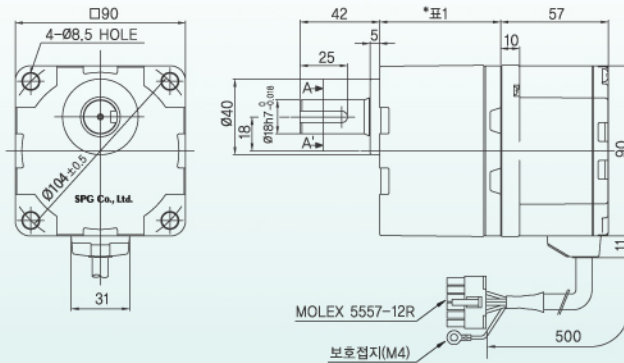
Part	Weight(kg)	
Motor	0.75	
Gear Head	XTG85K~XTG820K	0.61
	XTG830K~ XTG8100K	0.72
	XTG8200K	0.80

GEARED MOTOR

■ Model : XLA975()-□K

[Unit : mm]

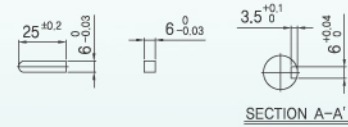
- Motor : XLM975G
- Gear Head : XTG95K~XTG920K
- Control Unit : XLD75()



- ※ 품명중의()는 전입사양을 표시합니다.
- ※ 품명 중의 □는 감속비를 표시합니다.
- ※ Geared Motor는 취부용 bolt set가 내장되어 있습니다. (사양은 19page 참조)

■ Key (부속품)

■ Key홀



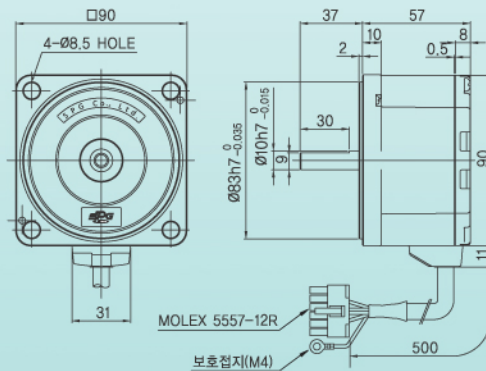
※ 표1

Gear Ratio	Size(mm)
XTG95K~XTG920K	45
XTG930K~ XTG9100K	58
XTG9200K	64

MOTOR

■ Model : XLM975D

[Unit : mm]



※ 표2-Weight

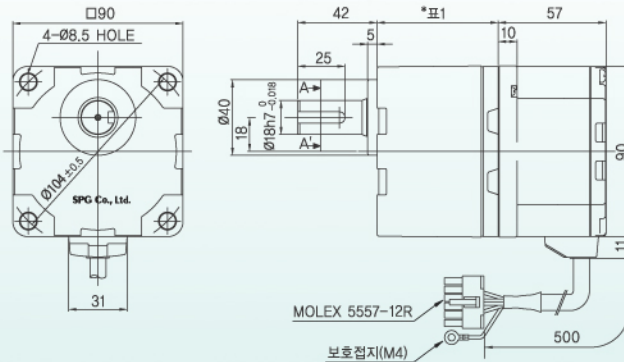
Part	Weight(kg)	
Motor	1.34	
Gear Head	XTG95K~XTG920K	0.85
	XTG930K~ XTG9100K	1.15
	XTG9200K	1.30

GEARED MOTOR

■ Model : XLA9120()-□K

[Unit : mm]

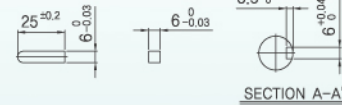
- Motor : XLM9120G
- Gear Head : XTG95K~XTG9200K
- Control Unit : XLD120()



- ※ 품명중의()는 전압사양을 표시합니다.
- ※ 품명 중의 □는 감속비를 표시합니다.
- ※ Geared Motor는 취부용 bolt set가 내장되어 있습니다. (사양은 19page 참조)

■ Key (부속품)

■ Key홀



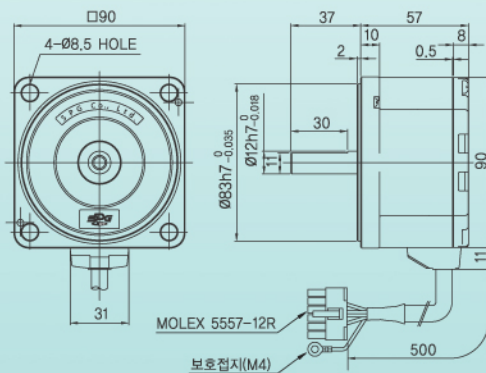
※ 표1

Gear Ratio	Size(mm)
XTG95K~XTG920K	45
XTG930K~ XTG9100K	58
XTG9200K	64

MOTOR

■ Model : XLM9120D

[Unit : mm]



※ 표2-Weight

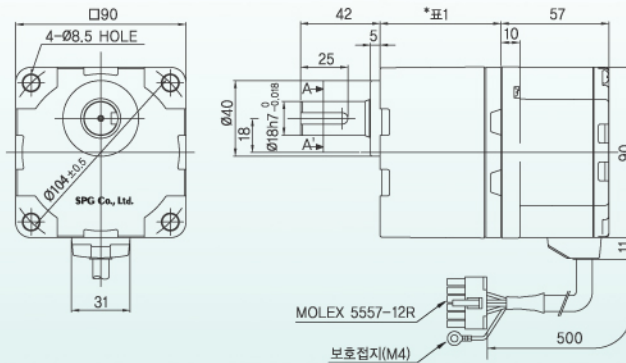
Part	Weight(kg)	
Motor	1.34	
Gear Head	XTG95K~XTG920K	0.85
	XTG930K~ XTG9100K	1.15
	XTG9200K	1.30

GEARED MOTOR

Model : XLA9150()-□K

[Unit : mm]

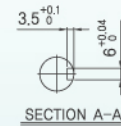
- Motor : XLM9150G
- Gear Head : XTG95K~XTG9200K
- Control Unit : XLD150()



- ※ 품명중의 ()는 전압사양을 표시합니다.
- ※ 품명 중의 □는 감속비를 표시합니다.
- ※ Geared Motor는 취부용 bolt set가 내장되어 있습니다. (사양은 19page 참조)

Key (부속품)

Key홀



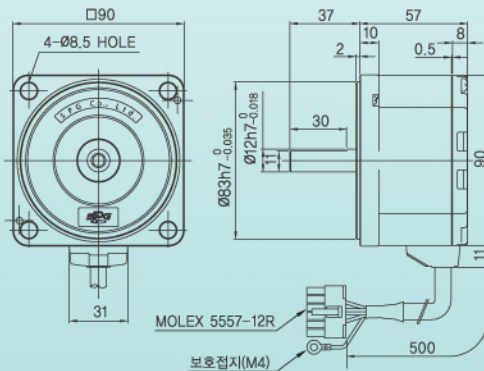
※ 표1

Gear Ratio	Size(mm)
XTG95K~XTG920K	45
XTG930K~ XTG9100K	58
XTG9200K	64

MOTOR

Model : XLM9150D

[Unit : mm]



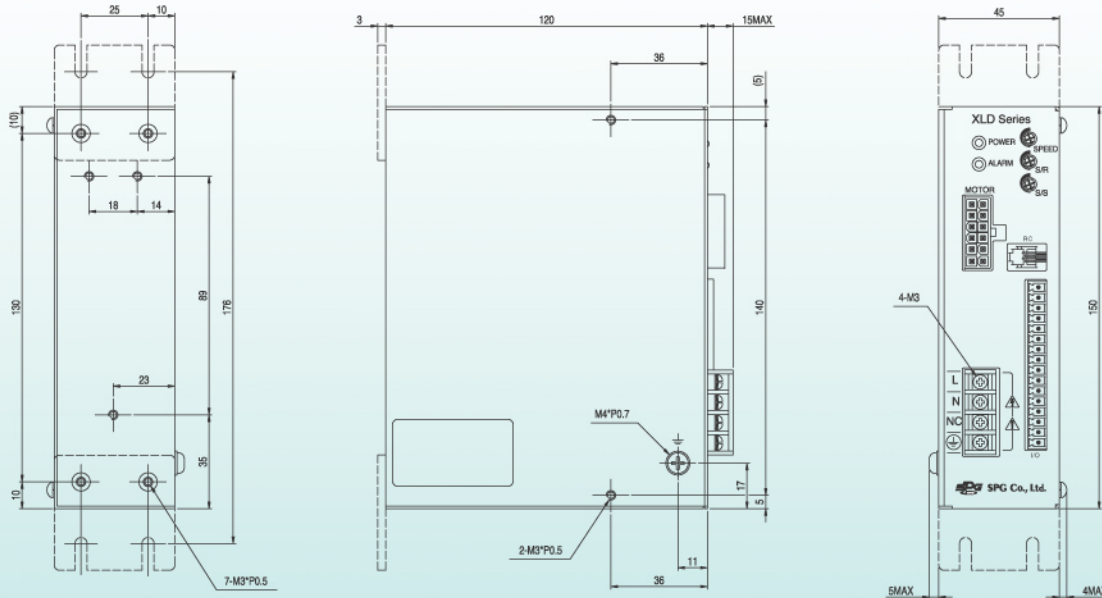
※ 표2-Weight

Part	Weight(kg)	
Motor	1.34	
Gear Head	XTG95K~XTG920K	0.85
	XTG930K~ XTG9100K	1.15
	XTG9200K	1.30

CONTROL UNIT

■ Model(전기종 공통) : XLD20(), XLD40(), XLD75(), XLD120(), XLD150() (Weight : 0.7kg)

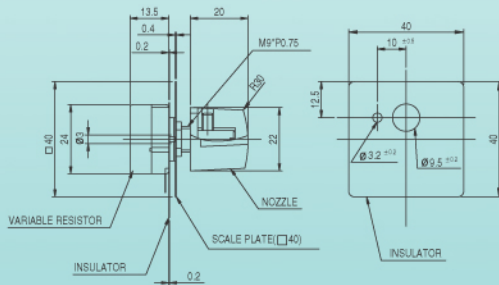
[Unit : mm]



외부속도 설정기

■ Dimension

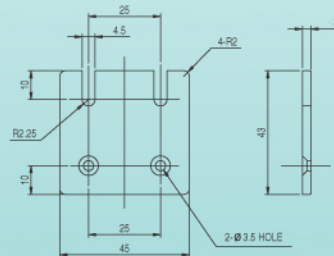
[Unit : mm]



취부 PLATE (2개 1조)

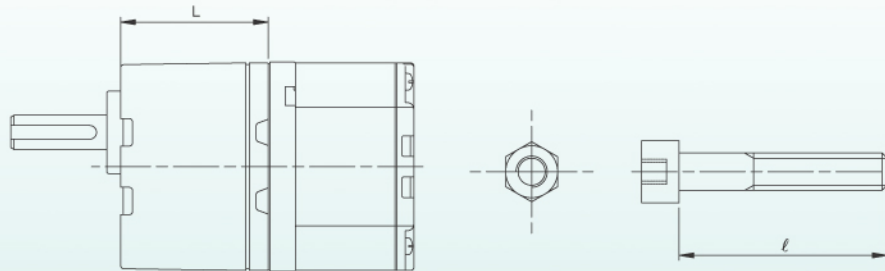
■ Dimension

[Unit : mm]



조립용 BOLT 치수

- 조립용 Bolt는 Gear Head 또는 Geared Motor에 부착되어 있습니다.



Model		부속 Bolt (평W/S, SPRING W/S, 육각NUT 각 4개)		
Gear Head	Geared Motor	L (mm)	φ (mm)	Bolt호칭
XTG65K~XTG620K	XLA620()-5K~XLA620()-20K	34	50	M4 P0.7
XTG630K~ XTG6100K	XLA620()-30K~XLA620()-100K	38	55	
XTG6200K	XLA620()-200K	43	60	
XTG85K~XTG820K	XLA840()-5K~XLA840()-20K	41	65	M6 P1.0
XTG830K~XTG8100K	XLA840()-30K~XLA840()-100K	46	70	
XTG8200K	XLA840()-200K	51	75	
XTG95K~XTG920K	XLA975()-5K~XLA975()-20K	45	75	M8 P1.25
	XLA9120()-5K~XLA9120()-20K			
	XLA9150()-5K~XLA9150()-20K			
XTG930K~XTG9100K	XLA975()-30K~XLA975()-100K	58	90	
	XLA9120()-30K~XLA9120()-100K			
	XLA9150()-30K~XLA9150()-100K			
XTG9200K	XLA975()-200K	64	95	
	XLA9120()-200K			
	XLA9150()-200K			